

# KURANDA ATTRACTIONS

Something for everyone



Wildlife & Walks • Soft Adventure • Arts & Markets • Accommodation



15 MINUTES DRIVE FROM SMITHFIELD ROUNDABOUT, KENNEDY HWY

[www.kurandaattractions.com](http://www.kurandaattractions.com)

# Welcome to Kuranda...

Kuranda Village is a mecca for visitors wanting to connect with nature and meet some of Australia's favourite animals. Visitors to Kuranda can enjoy a river cruise, explore rainforest trails, take in the sights of Din Din, the mighty Barron Falls, then discover authentic local arts, crafts, precious gems, and unique fashion in the markets and many retail outlets.

Make the time to explore Kuranda, why not stay a night or two at a campground or a romantic secluded retreat, nestled in the majestic tropical rainforest.

Only 15 minutes' drive from Smithfield (near Cairns), Kuranda Village is a great day out and well worth the drive.



Five daily interpretive river cruises let visitors experience the area's unique flora, fauna and history in tranquil and relaxing surroundings.

The river is home to a host of wildlife such as, freshwater crocodiles, turtles, cassowaries, fish, tropical butterflies and birds.

45-minute rainforest river cruises at 10.45am, 11.45am, 12.30pm, 1.30pm and 2.30pm.

Other times by arrangement



All tours depart from our jetty below the Kuranda Railway Station - Walk across the railway footbridge and go down the stairs to the river where you will see our red flags flying.  
[www.kurandariverboat.com.au](http://www.kurandariverboat.com.au) • 0412 159 212



*Kuranda Attractions acknowledges the traditional custodians of the lands on which we operate our businesses.*

*We recognise the Buluwai and Djabugay Aboriginal peoples 'Bama' and respect their cultural heritage and spiritual connection with their lands.*



## KURANDA Heritage Markets



The Kuranda Heritage Markets is a family run business, established over 30 years ago in the picturesque rainforest of Kuranda. The markets are an all-weather facility with a variety of organic produce, locally sourced from the region as well as exotic spices and healthy treats. The stalls have a wide range of local art, craft and Australian made products. The markets are also home to Geronimo, our famous plane wreck and a beautiful giant fig tree, home to many wild birds.



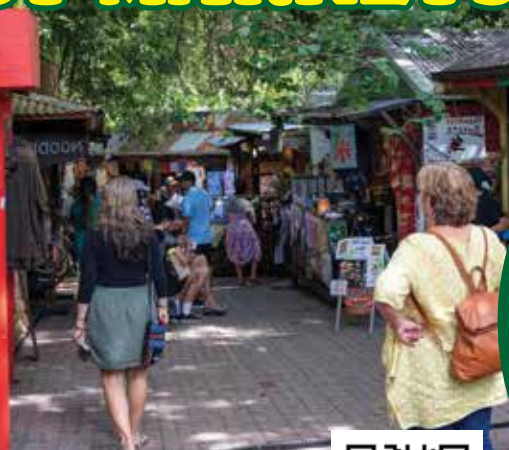
OPEN 10am to 3.30pm WEDNESDAYS TO SUNDAYS \*Please check website for school holidays operating hours  
[www.kurandamarkets.com.au](http://www.kurandamarkets.com.au) • 2/4 Rob Veivers Drive, Kuranda • 07 4098 060





# KURANDA ORIGINAL RAINFOREST MARKETS

These markets had their humble beginnings in 1978 organised by a group of local Hippies. Today the Original Markets has retained its atmosphere, with many local artists and personalities making it part of their lifestyle. Featuring contemporary arts, great clothing, a range of food cuisines, jewellery, mini golf course, magical lane, gardens and much more.



OPEN 10am to 3pm WEDNESDAY TO SUNDAY (Mondays during school / public holidays)  
[www.kurandaoriginalrainforestmarket.com.au](http://www.kurandaoriginalrainforestmarket.com.au)  
7-13 Therwine St, Kuranda • 0408 728 711



## HONEYBEE HOUSE



HOLIDAY ACCOMMODATION



Charming two bedroom rainforest cottage on acreage.

[www.honeybeehouse.com.au](http://www.honeybeehouse.com.au)



## EMU RIDGE GALLERY FOSSIL AND GEMSTONE MUSEUM

Famous for our FREE Gemstone and Fossil Museum, also our star attraction, a life size Allosaurus Dinosaur skeleton. Our gift shop sells a great range of unique Gemstones, Crystals, Fossils, Carvings and Jewellery from Australia and around the World.

OPEN 9am to 3pm WEDNESDAY TO SUNDAY  
FREE ADMISSION • [www.emuridgegallery.com.au](http://www.emuridgegallery.com.au)  
7-11 Therwine St, Kuranda • 0408 728 711



## Rainforest Walks

### BARRON FALLS

Visit one of Queensland's most popular National Parks. The 1,200 metre return walk (40 min.) winds through lush rainforest on elevated boardwalks before arriving at the lookout, overlooking the mighty Barron Falls. Wheelchair accessible with assistance.

### RIVER AND RAINFOREST WALK

**3 walks in 1.** The River Walk, Jungle Walk and Jumrum Creek Trail link together to create a 3 km (45-60 min) walk. Cross over the railway lines at the station, take the steps to the river and walk downstream. Take the Jungle Walk that links to Jumrum Creek before exiting at Coondoo St near the Visitor Centre.





## ORGANIC PERFUME EXPERIENCE

- Design your own signature perfume
- Explore 40 essential oils with Local distillers
- 1 hour workshops - Bookings essential



**RARE EARTH OILS®**  
from the wild

15 Coondoo St, Kuranda 0417566329



Enchantment for all to explore

# The Magical Lane

Find real magic in a secret fairy garden deep inside a fairy shop

1hr Tea Party - full experience,  
10am, 12pm or 2pm \$30pp  
**BOOKINGS REQUIRED**

Quest \$20pp, Walk through \$5pp

Open 10am to 3pm WEDNESDAY TO SUNDAY

The Original Kuranda Markets, 13 Therwine Street

www.themagicallane.com.au • Fairy Jenny 0405 414 438



## KURANDA ARTS CO-OP



**unique and innovative works by local professional artists**

media paintings ~ photography ~ textile designs ~  
jewellery ~ sculpture ~ ceramics ~ glass ~ weaving

Open 10am to 4pm EVERY DAY except Christmas Day • 07 4093 9026

www.kurandaartscoop.com • 17 Coondoo St, Kuranda •



Stylish holiday accommodation –  
only five minutes from Kuranda Village



www.springhavenkuranda.com

## Batreach

KURANDA • TROPICAL NORTH QUEENSLAND

Bats

Possums

Gliders

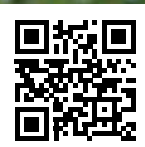
Orphaned or injured native animal

Preserving Australia's unique wildlife

Guided tours by appointment between 10.30am – 2.30pm

Tuesday, Thursday & Sunday. **BOOKINGS ESSENTIAL.**

www.batreach.com • 07 4093 8858



## A UNIQUE RAINFOREST VENUE



• 165 acres of pristine rainforest accommodation

• Spacious grassy campgrounds

• Camp kitchen, laundry & WiFi

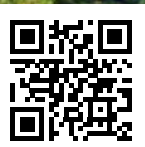
• Cabins for family or romantic getaways

• On-site cafe/bar • Events space



186 Mount Haren Road, Kuranda • 07 4093 7684

www.thebillabong.com.au



Visit the best of  
Australian Wildlife!



OPEN 10am to 4pm DAILY • [www.koalagardens.com](http://www.koalagardens.com)  
Kuranda Heritage Markets, Rob Veivers Drive • 07 4093 9953



Surround yourself with  
living colour!



OPEN 10am to 4pm DAILY • [www.birdworldkuranda.com](http://www.birdworldkuranda.com)  
Kuranda Heritage Markets, Rob Veivers Drive • 07 4093 9188



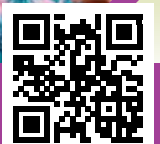
## KURANDA Wildlife EXPERIENCE

**Three wildlife attractions for one great price!**

Kuranda Koala Gardens, Birdworld Kuranda and the Australian Butterfly Sanctuary, which is home to over 1,000 superb tropical butterflies, including the spectacular Cairns Birdwing in a free-flying habitat.



OPEN 10am to 3.30pm daily • [www.koalagardens.com](http://www.koalagardens.com)  
BUY TICKETS AT KURANDA KOALA GARDENS OR BOOK ONLINE • 07 4093 9953



# THE UNOFFICIAL

# MAP OF KURANDA

Kuranda has many fantastic shops, cafes and experiences. Not every business is mentioned on the map. Treat it like a Treasure Map. Pick out a destination, plot your course and get ready to discover local creativity and fascinating characters along the way.

- 1 BATREACH**
- 2 BIRDWORLD KURANDA**
- 3 EMU RIDGE GALLERY**
- 4 HONEYBEE HOUSE HOLIDAY ACCOMMODATION**
- 5 KURANDA ARTS CO-OP**
- 6 KURANDA KOALA GARDENS**
- 7 KURANDA ORIGINAL RAINFOREST MARKETS**
  - Honey House
  - Kuranda Kneecare
  - Art of Ion
  - Vittoria's Emporium
  - The Magical Lane
  - Hayabusa of Kuranda
  - Japanese Tea House
  - Tantrika
  - Rainforest Mini Golf
  - Eazytiger Kuranda
- 8 KURANDA RIVERBOAT**
- 9 KURANDA HERITAGE MARKETS**
  - David H Stacey Gallery
  - Wholesome Kuranda
  - Bush Essentials
  - Distill on the Hill
  - Kuranda Gelato
  - Frogs Restaurant
  - The Chilli Shop Kuranda
  - Jungle Soul Clothing
  - Stones Down Under
  - Tropical Jewellery and Gifts
- 10 RARE EARTH OILS**
- 11 SPRING HAVEN**
- 12 THE BILLABONG**
- 13 THE MAGICAL LANE**

★ Cassowary Art Trail - Public Display

- 1 Australian Butterfly Sanctuary**
- 2 Barron Falls Hotel**
- 3 Butterfly Shop**
- 4 Café Mandala**
- 5 Ceti Bath Shop**
- 6 Creative Communities**
- 7 Didi La Bajisse Art Studio & Gallery**
- 8 Doongal Aboriginal Art**
- 9 Fruibies**
- 10 German Tucker**
- 11 Here's Good**
- 12 Hideout Kuranda**
- 13 Just Gorgeous**
- 14 Kuranda Candy Kitchen**
- 15 Not Just Chocolate**
- 16 Petit Café**
- 17 Riley's Café & Bar**
- 18 Terra Nova**
- 19 Tonketti Trading**
- 20 Zaphire**
- 1 Cornetts IGA**
- 2 Kuranda BP**
- 3 Kuranda Pharmacy**
- 4 Gurii Gambi Laundromat**
- P Car Parking**



The producers of this map do not represent any official tourism body and we openly admit the map has many inaccuracies. It's not to scale and the location markers are a guess.

## How to get to Kuranda

**DRIVE YOUR OWN VEHICLE OR HIRE A CAR**  
 15 minutes drive from Smithfield roundabout, Kennedy H/way.  
**PUBLIC PARKING – Thoree Street**  
 Continue down Rob Veivers Drive to first roundabout, turn right (second exit) into Thoree Street, entrance is on the right.

**COACH DAY TOURS**

- **Down Under Tours** Ph: 4047 9066
- **Brett's Kuranda Tours** Ph: 4098 5059
- **Tropic Wings** Ph: 4041 9400

**KURANDA SCENIC RAILWAY**  
 Departs Cairns Station at 8.30am, Freshwater Station at 8.55am, leaving Kuranda at 3.30pm  
 Ph: 1800 577 245

**SKYRAIL RAINFOREST CABLEWAY**  
[www.skyrail.com.au](http://www.skyrail.com.au)  
 Download Skyrail's multi-lingual Interpretive App and Audio Guide from the App Store or Google Play.

Visit [www.kurandaattractions.com](http://www.kurandaattractions.com) for recommended packages, tours and self-drive itineraries